



**LINCOLN
UNIVERSITY**

TE WHARE WĀNAKA O AORAKI

Lincoln University Student Exchange (Outbound)



Study overseas as part of your Lincoln University degree

At Lincoln University we take pride in offering our students the chance to study overseas as part of their degrees.

Overseas study allows you to grow, by experiencing different cultures and perspectives, creating new relationships and expanding your view of the world.

By grabbing hold of the opportunity Student Exchange offers you will be more able to help shape that world. It's a once-in-a-lifetime experience to grow like never before.

Contents

Where can you study?	02
Exchange study chart	12
Am I eligible?	17
How to plan your exchange	18
How to apply	19
Finances	20
Contact	23



Where can you study?

ASIA

Indonesia

Universitas Brawijaya (UB)

UB is one of the leading universities in Indonesia with more than 60,000 students in various vocational, bachelor, master, doctoral, professional, and medical specialist programs. Founded in 1963.

UB takes pride as one of the leading universities in Indonesia specializing in agriculture, medicine, economics, law, engineering and information technology.



Find out more:
<https://ub.ac.id/id/>

AUSTRALASIA

Australia

University of Wollongong

We are a young and vibrant university with undiminished ambitions. We value our research capacity to work on complex interdisciplinary problems. Our spirit of inquiry drives our research and learning environments and our objective of earning a place in the top 1% of the world's universities.

Being Australia's 9th largest city and just over an hour from Sydney, Wollongong is a vibrant city that offers the perfect Australian lifestyle. It's affordable, easy to get around and enjoys a lower cost of living than other Australian cities.

Our courses have been developed by

teachers who are leading their fields. Our student-focused approach to teaching and learning means you will have the guidance and support you need. And this all takes place in a city on one of Australia's most beautiful coastlines.



Find out more:
<https://www.uow.edu.au/>

EUROPE

Austria

BOKU (University of Natural Resources and Life Sciences), Vienna, Austria

The University of Natural Resources and Life Science, Vienna (BOKU University) is among the leading universities for sustainability in Europe and combines natural, technical and socio-economic sciences. BOKU sees itself as an innovation leader in the green economy, with the goal of integrating sustainability into all processes in society. It comprises 15 departments and a number of experimental centres around Vienna and is the only Austrian university in the area of Natural Resources Management and Life Sciences, with some 10,500 students (24% of which are international).



Find out more:
<https://www.boku.ac.at>



Do it! I was incredibly nervous to go as had never left the country. But once I was there, time flew, and it became a home away from home. The memories and experience are well worth the investment.

Breanna Holt
B.Sci (Agriculture)
Oregon State University





Czech Republic

Mendel University

MENDELU was founded in 1919 and proudly bears the name of J. G. Mendel, the founder of modern genetics. There are over 8,300 students at the University, 1,600 of them are international students. The University offers more than 100 different graduate degree programmes in Czech and in English.

The modern university campus is based in Brno, the second largest city in the Czech Republic - the heart of Europe. Brno is considered one of the best student cities as it is listed in the 2018 Top 10 QS Best Student Cities as rated by students.

→ Find out more:
<https://mendelu.cz/en/>

Czech University of Life Sciences, Prague

A member of the euroleague for life sciences – a network of top life sciences European universities

21 000 Students. 6 Faculties, 20% of students are international

The most sustainable campus in Czechia, all in one place on an american-styled campus – school and research facilities, residence halls and canteen, sports amenities and.

Options for double and joint degree programmes, exchange programmes, traineeships, and summer schools.

→ Find out more:
<https://www.czu.cz/en>

Denmark

Copenhagen Business School

One of the largest business schools in Europe with close to 20,000 students, primarily located in four modern buildings in Frederiksberg, close to the heart of Copenhagen.

→ Find out more:
<https://www.cbs.dk/en>

University of Copenhagen

Founded in 1479, with over 37,000 students and more than 7000 employees, the University of Copenhagen is the largest institution of research and education in Denmark. The University is a central part of Copenhagen – the capital of Denmark.

→ Find out more:
<https://www.ku.dk/english/>

France

École Nationale Supérieure Agronomique de Toulouse (ENSAT)

Excellence in training, cutting-edge research, a privileged framework. ENSAT meets the needs of businesses by training high-performance young talents capable of becoming real experts in the fields of agronomy and agri-food and the environment. Research is a real driving force for ENSAT. All training is based on nationally and internationally recognized research laboratories.

→ Find out more:
<https://www.ensat.fr/fr/index.html>

L'Institut Agro

L'Institut Agro is a French higher education and research institution in the fields of food, agriculture, environment, and landscape.

It has 4 campuses spread across the country: Angers, Dijon, Rennes and Montpellier.

It covers all topics and sectors related to plants and animals, including vine and wine, horticulture, fisheries, and landscaping.

L'Institut Agro aims to support agroecological, food and environmental transitions & transformations in a context of global climate, ecological and food urgency.

It offers a wide range of opportunities for international students.

→ Find out more:
<https://institut-agro-dijon.com>

Germany

Geisenheim University

Offers high-quality bachelor's degrees in Viticulture & Oneology, International Wine Business, Beverage Technology, Horticulture and Landscape Architecture.

→ Find out more:
<https://www.hs-geisenheim.de/en/>

Rhine-Waal University of Applied Science (HSRW)

Rhine-Waal University of Applied Sciences, has two campus locations in Kleve and Kamp-Lintfort. A university that is both deeply rooted in the Lower Rhine and connected to the world. Through applied teaching and learning, small class sizes, a diverse atmosphere of intercultural exchange, and integrated internship/ placement requirements, HSRW train the specialists of tomorrow, who are well equipped with the skills to prosper in a globalised marketplace.

→ Find out more:
<https://www.hochschule-rhein-waal.de/en>



University of Hohenheim

The University of Hohenheim engages in a combination of disciplines that is unique among German universities. It is the leading university in agricultural and food sciences and also strong and unparalleled in natural, business, economic, and communication sciences.

It is not only about content, but also about atmosphere: Hohenheim is one of the few campus universities in Germany and the green campus around a baroque palace is known as the most beautiful campus in Germany

→ Find out more:
<https://www.uni-hohenheim.de/en/english>

Ireland

University College Dublin

University College Dublin is Ireland's largest and most global university. It ranks in the top 1% of universities worldwide and has 30,000 students. The University has a vibrant culture and beautiful grounds.

→ Find out more:
<https://www.ucd.ie>



Netherlands

Wageningen University

Wageningen University and is the only university in the Netherlands to focus specifically on the theme 'healthy food and living environment'. We do so by working closely together with governments and the business community. Wageningen is one of the top-ranked universities in the world. According to influential university rankings, the university ranks world's best in the field of Agriculture & Forestry.

→ Find out more:
<https://www.wur.nl/en/wageningen-university.htm>

Norway

Norwegian University of Life Sciences

The Norwegian University of Life Sciences (UMB) is located in Aas (Ås), approximately 35km south of Oslo. The campus park is one of the largest neoclassic parks in Norway, covering some 150 acres. UMB has a population of 3150 students, 18% of these being international. Norway is often ranked as one of the best places in the world to live in various polls and surveys.

→ Find out more:
www.nmbu.no/en



Sweden

Swedish University of Agricultural Sciences, Uppsala

SLU plays a key role in development for sustainable life, based on science and education. In a changing world, SLU is a world-class university that plays a key role in the transition to a sustainable society. Through our focus on the interaction between humans, animals and ecosystems and the responsible use of natural resources, we contribute to sustainable societal development and good living conditions on our planet.

→ Find out more:
<https://www.slu.se/en/>



United Kingdom

University of Reading, United Kingdom

With 19,000 students from over 150 countries, the University of Reading is ranked amongst the UK's top 30 universities. Offering a wide range of programmes, its main campus is recognised as one of Britain's top green spaces.

→ Find out more:
<https://www.reading.ac.uk>

The Royal Agricultural University (RAU) Gloucestershire

The Royal Agricultural University (RAU) has been at the forefront of agricultural education and a key contributor to the land-based sector for more than 175 years. We pride ourselves in combining knowledge and industry connections with an innovative, forward-thinking approach.

Scholarship available

→ Find out more:
<https://www.rau.ac.uk>



How could it be that I, an ordinary young Kiwi, could be here in Europe doing such awesome things? From witnessing the UK Dairy Expo at Carlisle to exploring the remnants of Hadrian's Wall.

Cameron Hicks
B.Com Agriculture
University of Reading



NORTH AMERICA

Canada

University of Guelph

Our beautiful 330-hectare campus supports a community of over 20,500 undergraduate and 2500 graduate students, including over 1200 international students from around the world. Our students benefit from an innovative curriculum that spans the arts, humanities, commerce, physical and natural sciences, and social sciences. The University has over 800 full-time faculty and students are also supported by more than 2,100 full-time staff. University of Guelph is consistently ranked as one of Canada's top comprehensive universities due to our commitment to student success and innovative research. In recent International Student Barometer surveys, U of G ranked No. 1 for overall learning, living and student support, and had the highest overall average among participating universities in Ontario and Canada.

→ Find out more:
www.uoguelph.ca

United States of America

Colorado State University

Colorado State University is situated in Fort Collins, Colorado. The University has over 22,000 undergraduate students and 3,500 graduate students. Fort Collins sits between the Great Plains and the Rocky Mountains, has a population of 131,000, and is 100km north of Denver, the largest city and capital of Colorado State.

→ Find out more:
www.colostate.edu

Oregon State University

Oregon State University was founded more than 150 years ago as a land grant institution, building on the idea that everybody deserves an extraordinary education that's attainable and accessible. Here you can determine your purpose, shape your identity and values and become who you want to be.

→ Find out more:
www.oregonstate.edu



Cornell University

Founded in 1865, Cornell University is the federal

land-grant institution of New York State, a private endowed university, a member of the Ivy League, and a partner of the State University of New York. It has been described as the first truly American university because of its founders' revolutionarily egalitarian and practical vision of higher education and is dedicated to its land-grant mission of outreach and public service.

The College of Agriculture and Life Sciences (CALS) at Cornell University is considered one of the very best of its kind in the United States, if not the world. Our mission is to discover, integrate, disseminate, and apply knowledge about agriculture and food sciences, applied social sciences, environmental sciences, and the life sciences as a basis for sustainable improvement in the lives of people throughout New York, the nation, and the world.

→ Find out more:
<https://www.cornell.edu/>

Purdue University

Purdue University is a coeducational, state-assisted system in Indiana. Founded in 1869, we are one of the nation's leading research institutions with a reputation for excellent and affordable education.

Our West Lafayette campus offers more than 400 majors for undergraduates, over 70 master's and doctoral programs, and professional degrees in pharmacy and veterinary medicine. In addition, we have 18 intercollegiate sports teams and more than 1000 student organizations.

→ Find out more:
www.purdue.edu

SUNY College of Environmental Science and Forestry

The SUNY College of Environmental Science and Forestry (ESF) is one of the most distinguished institutions in the United States that focuses on the study of the environment, developing renewable technologies, and building a sustainable future. We work to address the Earth's most pressing problems — and students come here because they want to be part of the solution.

At ESF, we aim to provide a home away from home for all students and to create a place where they are supported and set up for academic excellence.

→ Find out more:
<https://www.esf.edu/>

UW-Madison

University of Wisconsin-Madison has long been recognized as one of America's great universities, regularly ranked as one of the top public research universities in the United States.

Many of UW-Madison's academic programs are ranked among the best in the nation with 9000+ courses and 400+ degree programs. A public, land-grant institution, UW-Madison offers a complete spectrum of humanities, social science, business, science, and engineering courses.

Madison is the capital of Wisconsin and one of the hubs of education, business, and culture in our state, known for a vibrant entertainment and performing arts scene.

Madison residents are active, and spend time in parks, on bike paths, and in and around Madison's four lakes. Madison has frequently been ranked as one of the best places to live in the United States.

→ Find out more:
<https://wisc.edu>

SOUTH AMERICA

Brazil

University of São Paulo (USP)

The largest Brazilian public university and one of the country's most prestigious educational institutions. USP has five hospitals and offers 247 undergraduate programs and 239 graduate programs in all areas of study. The university houses altogether 24 museums and galleries. Agricultural campus (ESALQ) based in Piracicaba for research and internship opportunities

→ Find out more:
<https://www5.usp.br/english/institutional/>

Study option guide

 Course available

		Bachelor of Commerce	Accounting & Finance	Food & Resource Economics	Hotel & Tourism Management	Marketing	Supply Chain Management	Global Business	Horticulture	Agriculture	Bachelor of Agribusiness and Food Marketing	Bachelor of Land & Property Management	Bachelor of Environment & Society	Bachelor of Environment Management	Bachelor of Environmental Policy and Planning (Hons)	Bachelor of Landscape Architecture	Bachelor of Sport and Recreational Management	Bachelor of Tourism Management	Bachelor of Sustainable Tourism	Bachelor of Science	Brewing and Fermentation	Conservation and Ecology	Food Science
Austria	University of Natural Resources and Life Sciences (BOKU)																						
Australia	University of Wollongong																						
Canada	University of Guelph																						
Czech Republic	Czech University of Applied Science																						
	Mendel University																						
Denmark	Copenhagen Business School																						
	University of Copenhagen																						
France	L'Institute Agro																						
	Toulouse INP-ENSAT																						
Germany	Geisenheim University																						
	Rhine-Waal University of Applied Science																						
	University of Hohenheim																						
Indonesia	University of Brawijaya																						
Ireland	University College Dublin																						
Netherlands	Wageningen University																						
Norway	Norwegian University of Life Sciences																						
Sweden	Sweedish University of Agrucultural Sciences																						
	Umea University																						
United Kingdom	Royal Agricultural University																						
	University of Reading																						
United States	Colorado State Univeristy																						
	Cornell University																						
	Oklohoma State University																						
	Oregon State University																						
	Purdue University																						
	SUNY college of Environmental Science and Forestry (ESF)																						
	University of Wisconsin-Madison																						

*This table is intended as a guide only, and your choice of destination could be dependent on the electives you have.

Study option guide

Course available

		Bachelor of Agriculture	Bachelor of Agricultural Science	Bachelor of Horticulture	Bachelor of Viticulture and Oenology
Austria	University of Natural Resources and Life Sciences (BOKU)				
Australia	University of Wollongong				
Canada	University of Guelph				
Czech Republic	Czech University of Applied Science				
	Mendel University				
Denmark	Copenhagen Business School				
	University of Copenhagen				
France	L'Institute Agro				
	Toulouse INP-ENSAT				
Germany	Geisenheim University				
	Rhine-Waal University of Applied Science				
	University of Hohenheim				
Indonesia	University of Brawijaya				
Ireland	University College Dublin				
Netherlands	Wageningen University				
Norway	Norwegian University of Life Sciences				
Sweedan	Sweedish University of Agrucultural Sciences				
	Umea University				
United Kingdom	Royal Agricultural University				
	University of Reading				
United States	Colorado State Univeristy				
	Cornell University				
	Oklohoma State University				
	Oregon State University				
	Purdue University				
	SUNY college of Environmental Science and Forestry (ESF)				
	University of Wisconsin-Madison				

*This table is intended as a guide only, and your choice of destination could be dependent on the electives you have.





Am I eligible?

To be eligible for the Student Exchange programme you must

- be a current Lincoln University student
- have completed your first year of study at undergraduate level
- have a good overall academic standing with a minimum grade of B average
- be an outstanding Lincoln Ambassador.

The best time for your overseas study depends on the degree you are completing at Lincoln University.



It was an awesome, challenging and rewarding experience and I am so grateful for the privilege to participate in this programme

Braydon Schroeder
Bachelor of Agricultural Science
University of Guelph, Canada



How to plan your exchange



Write out your degree plan listing the courses that will comprise your Lincoln degree. The more electives you have in the semester you go away the easier it is. For Lincoln compulsory courses you need to find a suitable equivalency at the partner university.



Research the universities that interest you and compile a list of suitable courses. Check for any pre-requisites, course restrictions or limitations in your area of study.



As part of the Student Exchange application you will need to **provide the following:**

- Course approval from your course advisor and faculty academic programme manager
- An academic and character reference attesting to your academic performance, maturity and ability to adjust well to another country and its culture
- Personal statement on what you will gain from the overseas experience and how the experience will enhance your future plans
- Confirmation of good health – a Student Health Centre certificate stating that you are currently fit and well.

The final decision to accept or decline your application rests with the host university. If the host university accepts you, only then should you arrange flight tickets, student visa, medical insurance, and accommodation, etc.

How to apply

First apply for the Student Exchange Programme and, if you meet the eligibility requirements and are nominated to the university of your choice, you will then need to complete your host university's application form.



Choose a University from the list of partner institutions and research the courses you want to take.



Complete the application form at www.lincoln.ac.nz/studentexchange



Call in to Student Administration and see the Study Abroad and Exchange Coordinator to discuss the available options.

Key dates

Application deadlines are:

01
August
Semester one

01
December
Semester two
Late applications may be considered

Additional information

Tuition Fees

If you are accepted to go overseas, you will remain enrolled in your degree programme at Lincoln University. Therefore, you will continue to pay tuition fees to Lincoln University and are exempt from paying additional, or higher fees, at the host university. However, you will be responsible for any incidental service fees at the host institution.

You will be responsible for meeting the costs of participating in the overseas exchange programme. These include return airfares, accommodation, food, books/supplies, travel and personal spending, student visa fees, health and travel insurance, etc.

Studylink Loans and Allowances

If you are eligible to receive a StudyLink allowance and loan at Lincoln University, then you may be eligible to apply for allowances while you are overseas.



Find out more:
www.studylink.govt.nz

Scholarships

Lincoln University Overseas Exchange Award.

Lincoln University actively supports the student exchange programme with the Lincoln University Overseas Exchange Award. These scholarships are intended to contribute to, rather than cover the costs of, your participation in the overseas exchange programme.



Find out more:
<https://www.lincoln.ac.nz/study/scholarships/>
and search 'overseas'

Applications close on 31 March and 31 October each year.

From time to time there are other awards available such as free accommodation. Check with the Study Abroad and Exchange Coordinator.



"This experience sculpted me into someone who values different aspects of life. It's not just about academic achievements but also about understanding and appreciating the myriad cultures that make up our world."

James Budilarto
Bachelor of Science
Wageningen University



"Be open to meeting new people and starting fresh. New Zealanders are pretty lucky; everyone loves New Zealanders overseas. But don't forget to pack an All Blacks shirt!"

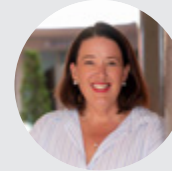
Fergus Lee
B.Agricultural Science
University College Dublin



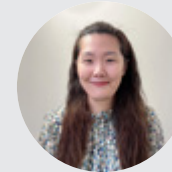
Contact



**For more information
please contact:**



Sarah Cook
International Manager
E: sarah.cook2@lincoln.ac.nz
P: 03 423 0006
www.lincoln.ac.nz



Hui Li
Study Abroad and Exchange Coordinator
E: student.exchange@lincoln.ac.nz
P: 03 325 3805
www.lincoln.ac.nz



Disclaimer Every effort is made to ensure that information in this publication is correct at the time of printing, but the content may be subject to change. Lincoln University reserves the right to make changes, amendments or deletions – including the withdrawal of courses – should circumstances change. Lincoln University does not assume, and hereby disclaims, any express or implied liability whatsoever to any party for any loss or damage caused by errors or omissions, whether these errors or omissions result from negligence, accident or any other cause Feb 2024.

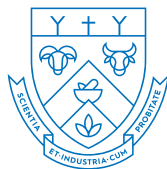
"Just do it, I was so apprehensive about the idea when I first started at Lincoln, but now, on the other side of it, it is the best thing you can do for degree. People really prick their ears when you say you've been on exchange, and you get so much from it. I have a really powerful network over there now, some great friends and the experience of a lifetime."

Claire McFetridge
Bachelor of Agriculture
Colorado State University

"The most valuable thing I experienced was the friends I made while over there. Not only did I meet many Canadians, I also met many international friends too! These connections are held so dear to me, even when they were created over a short time frame, and they have all impacted my life individually."

Georgia Fitzpatrick
Bachelor of Environmental Management,
Major in Parks and Outdoor Recreation
University of Guelph

Notes



LINCOLN
UNIVERSITY

TE WHARE WĀNAKA O AORAKI

Find out more at www.lincoln.ac.nz